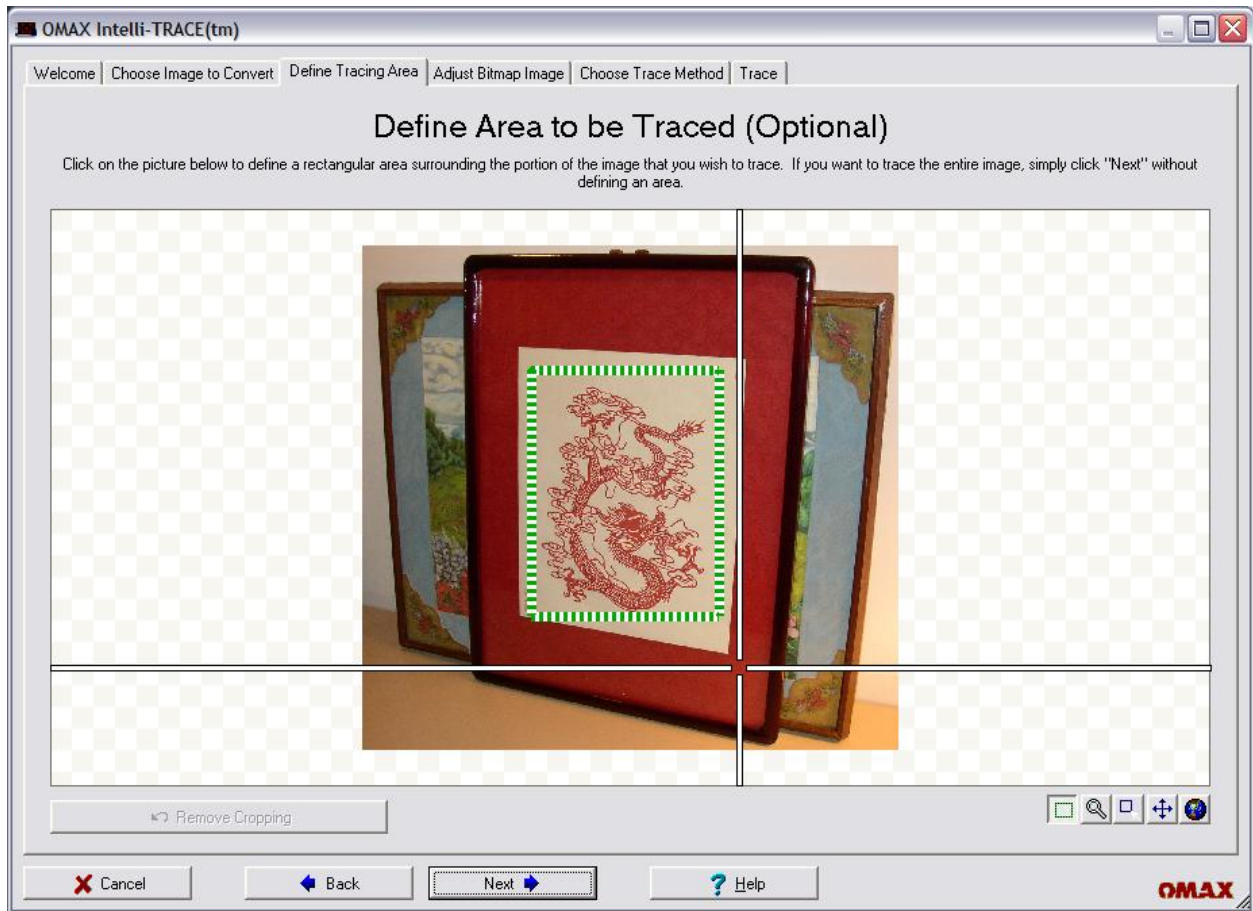


OMAX Intelli-TRACE with Design-to-Cut of a Chinese paper cut-out:

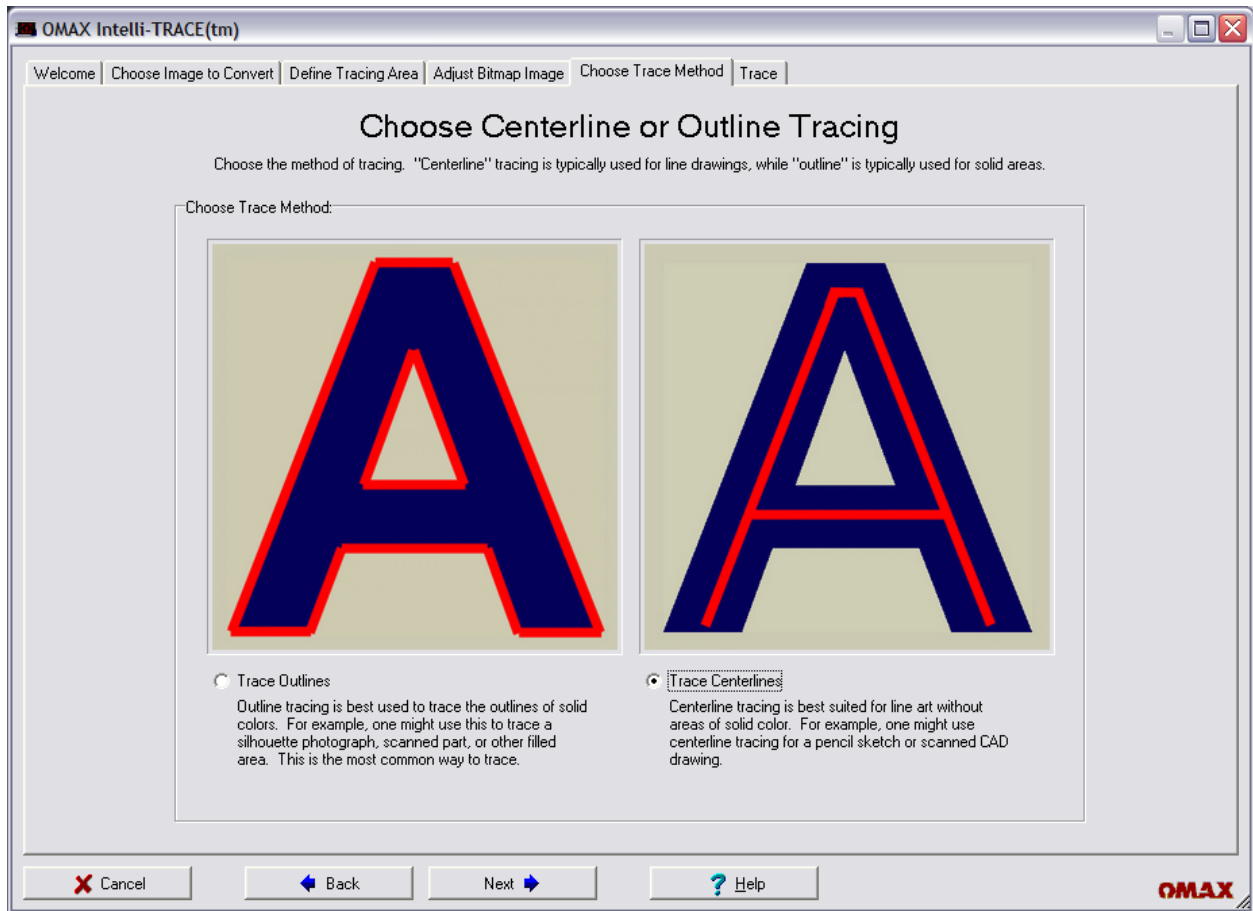
Start with a photo like so. In this case, it's a paper cut-out that is quite complex.



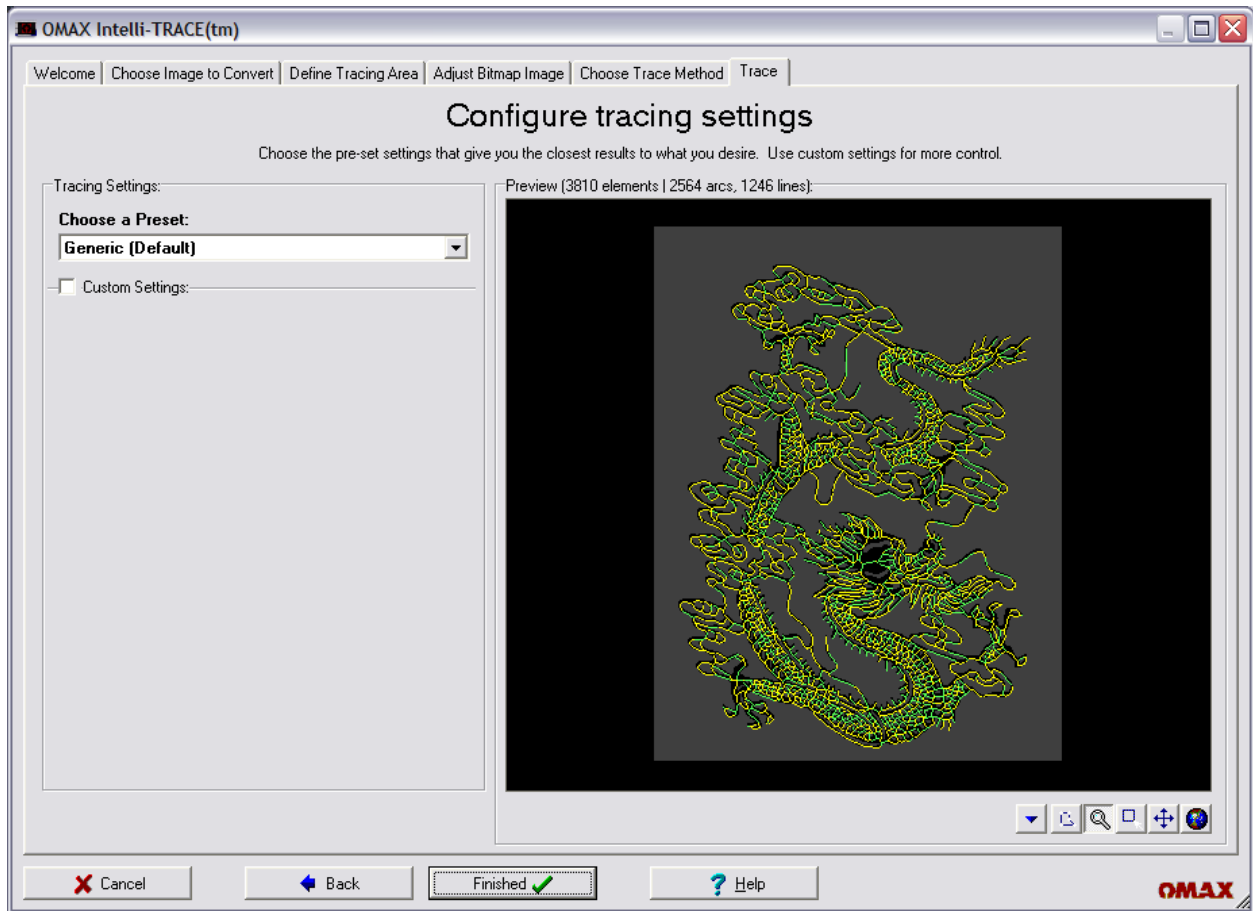
Crop the section you want to trace:



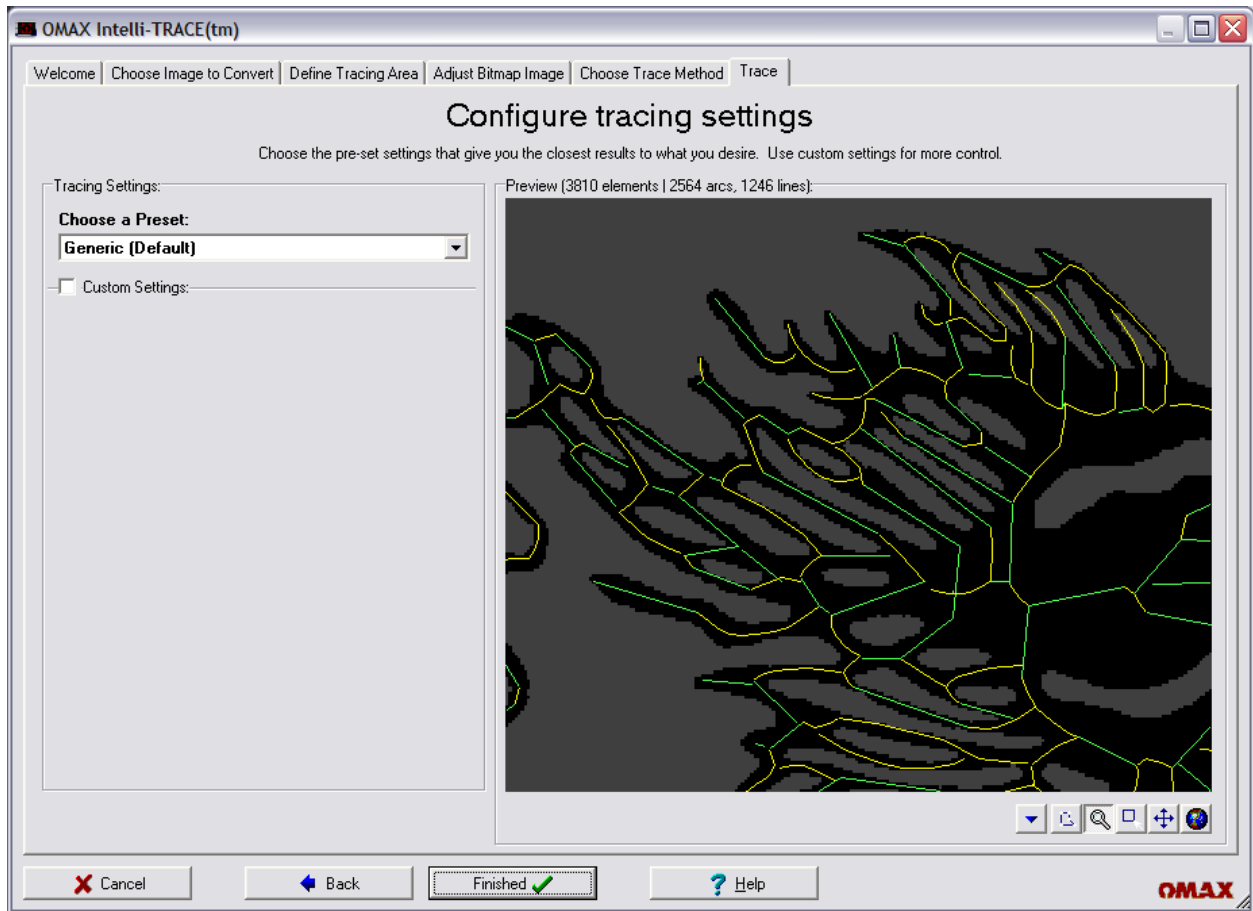
Choose the "Centerline Trace" option:



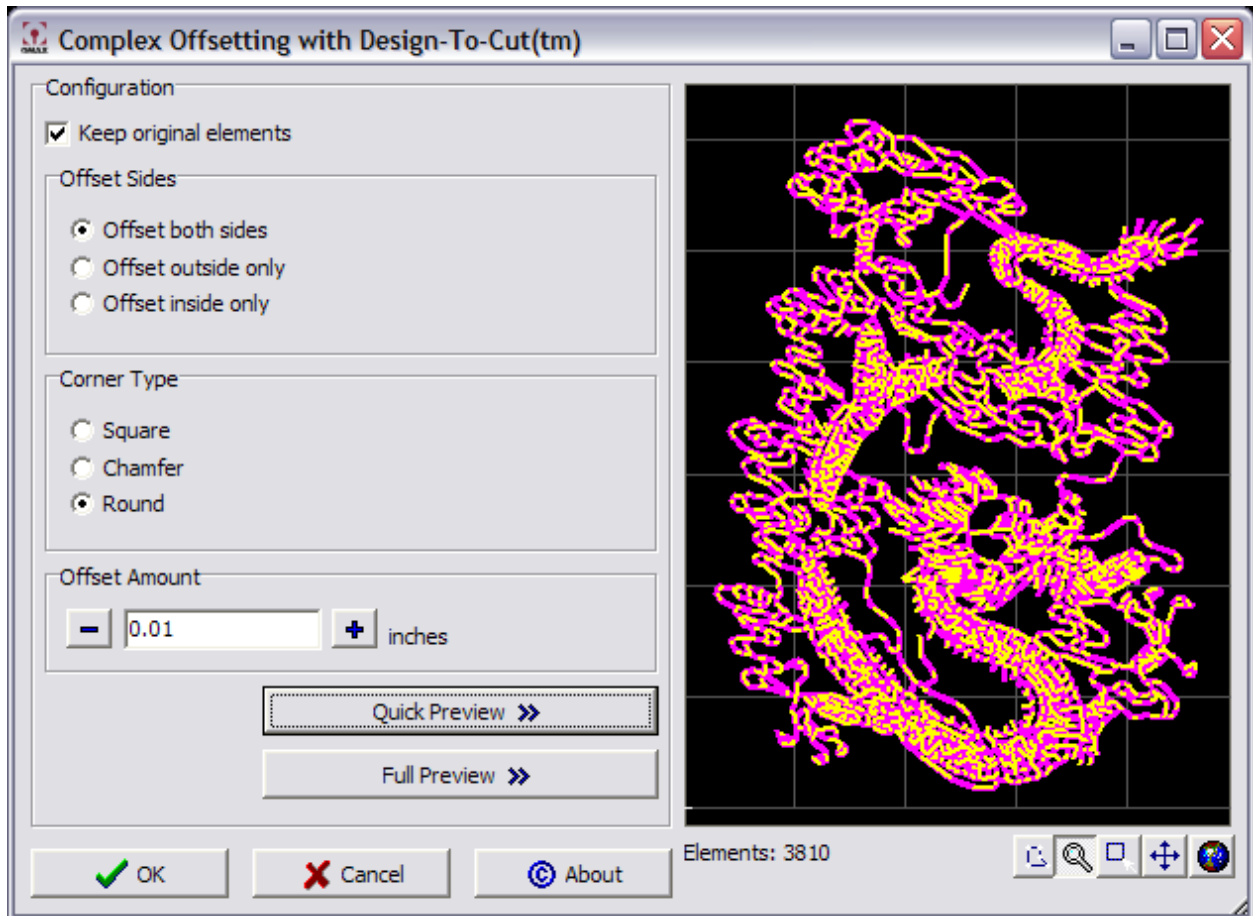
Let it trace:



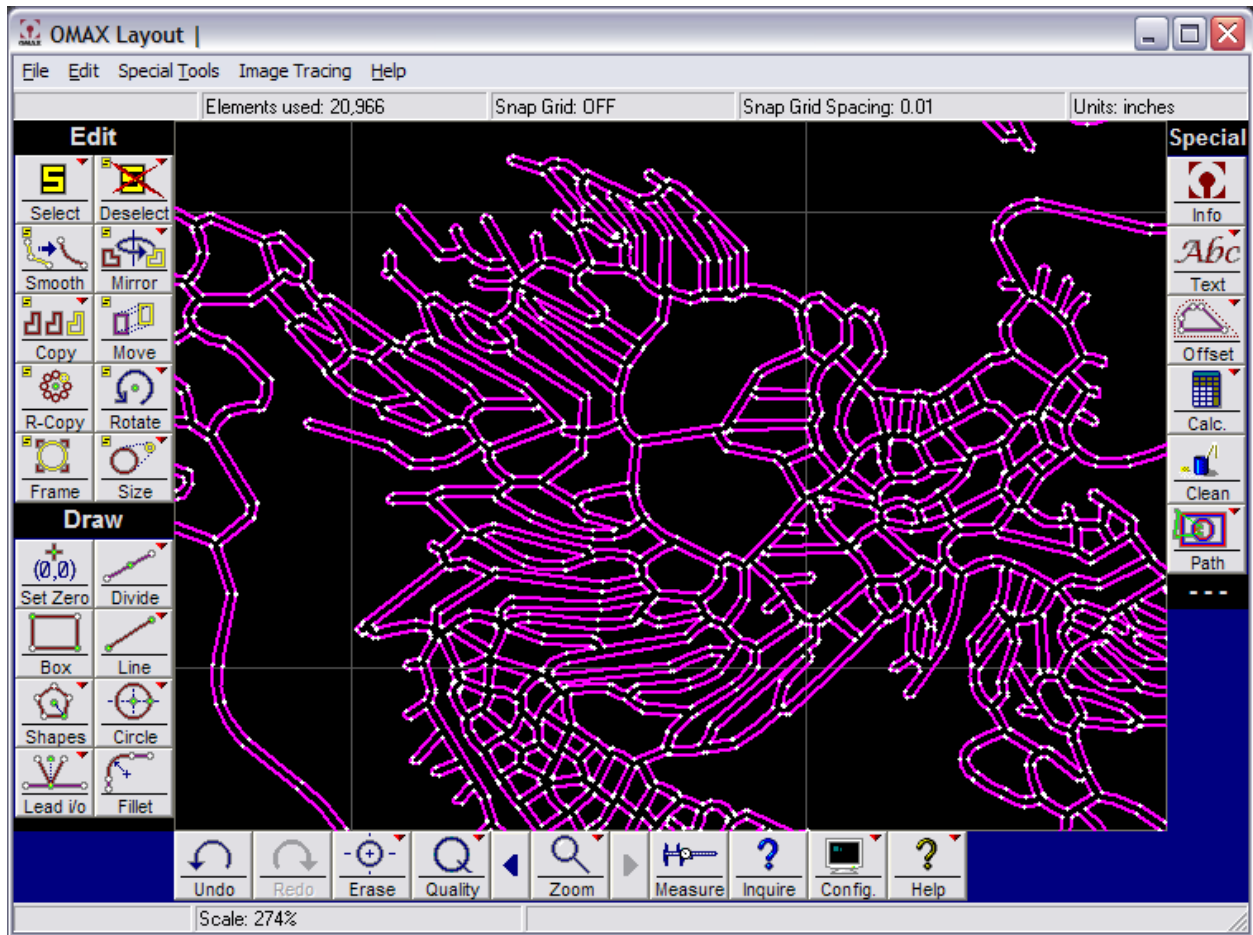
...and note that what you get is something quite messy and not suitable for cutting:



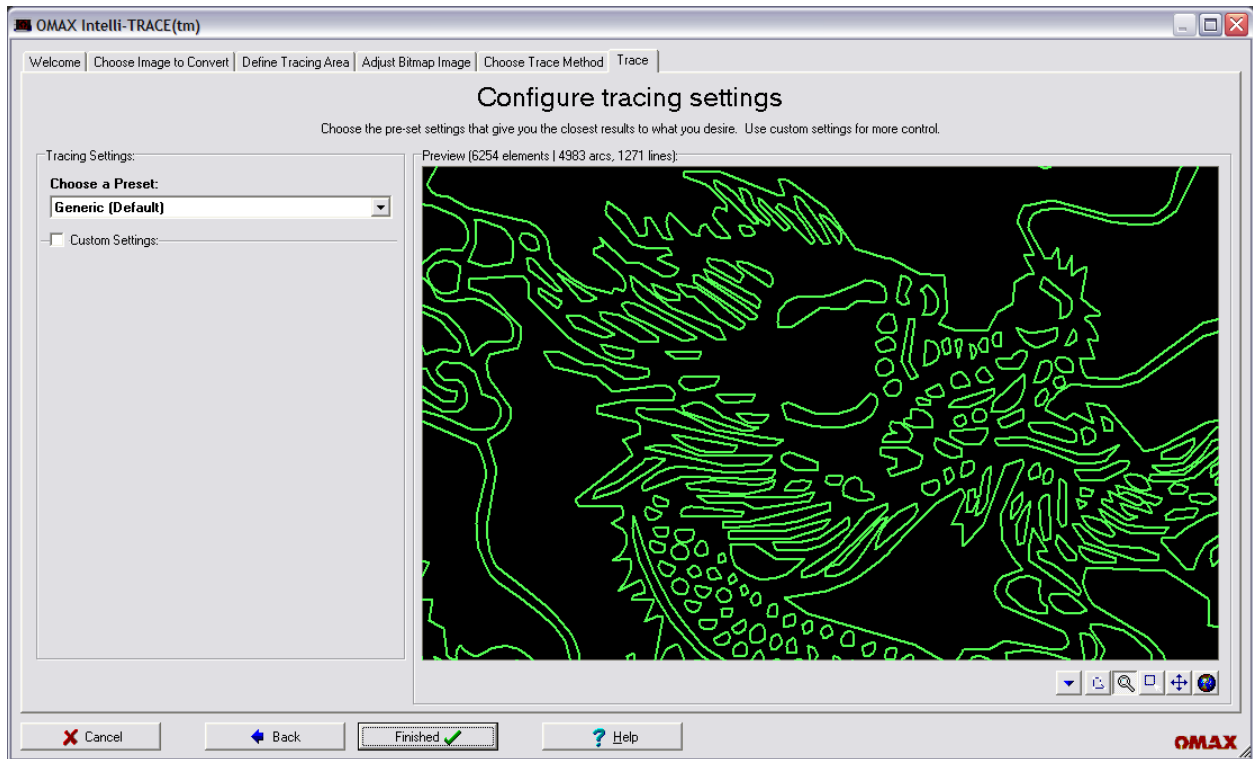
Now, run Design-To-Cut on it, to take the centerline trace, and back-convert it into an outline, just like the original paper:



Notice the exceptional quality of the newly outlined data:



...this gives a quite cool alternate result than one would otherwise expect from tracing this particular drawing using "outline trace" in Intelli-TRACE:



Either method gives good results, depending on what you want, but by combining centerline tracing with Design-To-Cut, you can very quickly make a veined artwork from a photo like this.