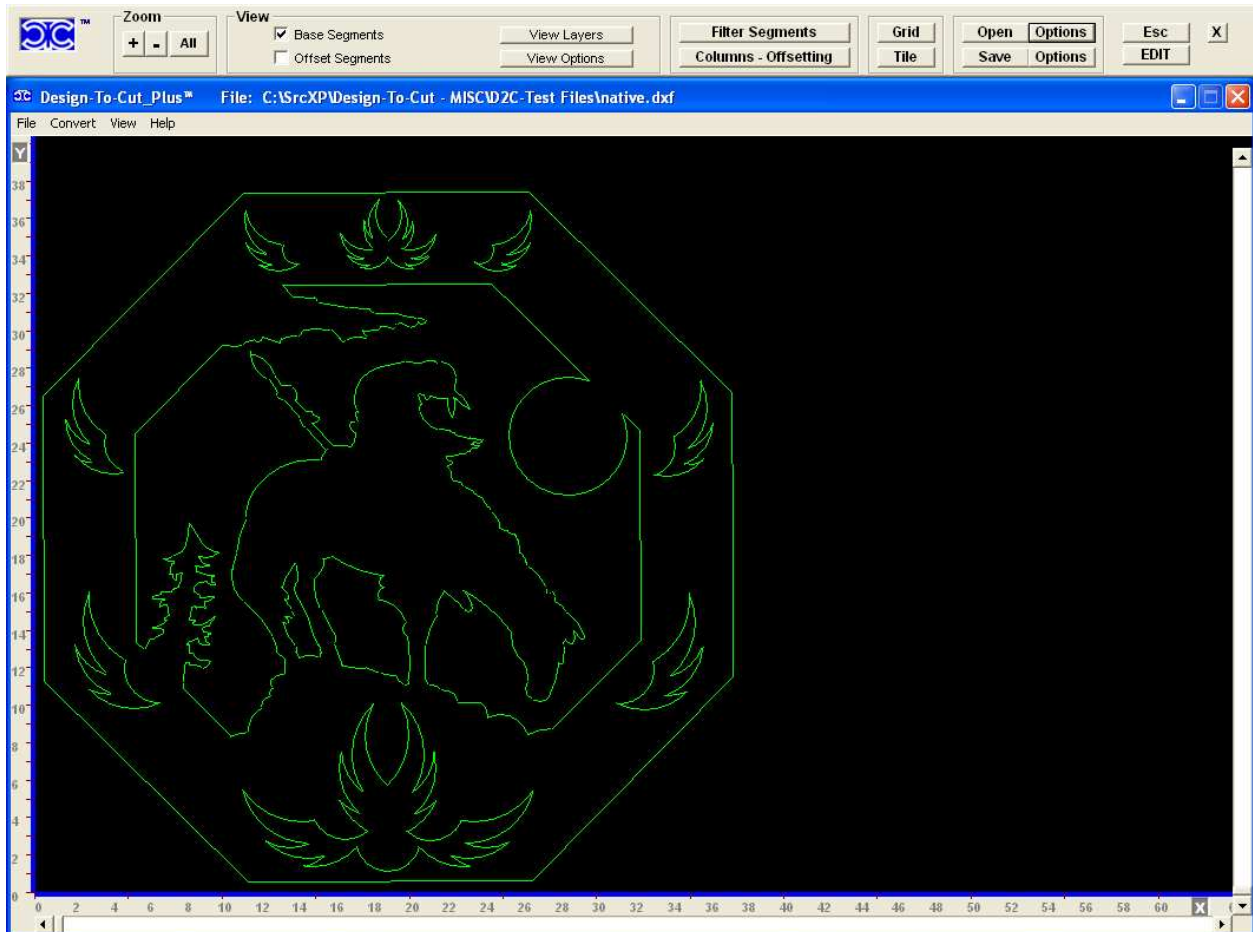


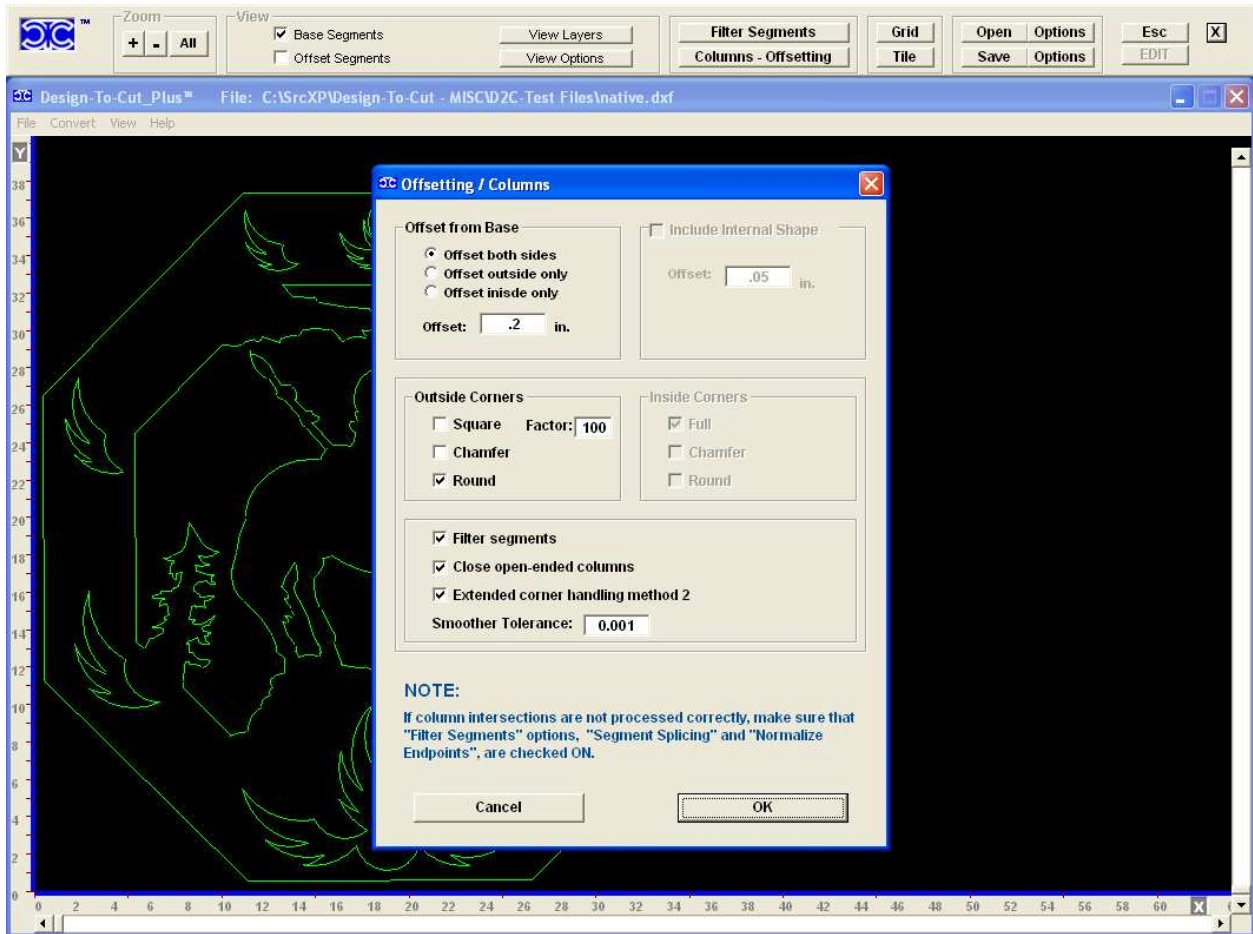
## Design-To-Cut\_Plus™ Tile Cutting Application

In this application, we are going to produce an inlay file and produce the tile-cut files in which our inlay will fit with precision. First, we open our design file:



Continued next page..

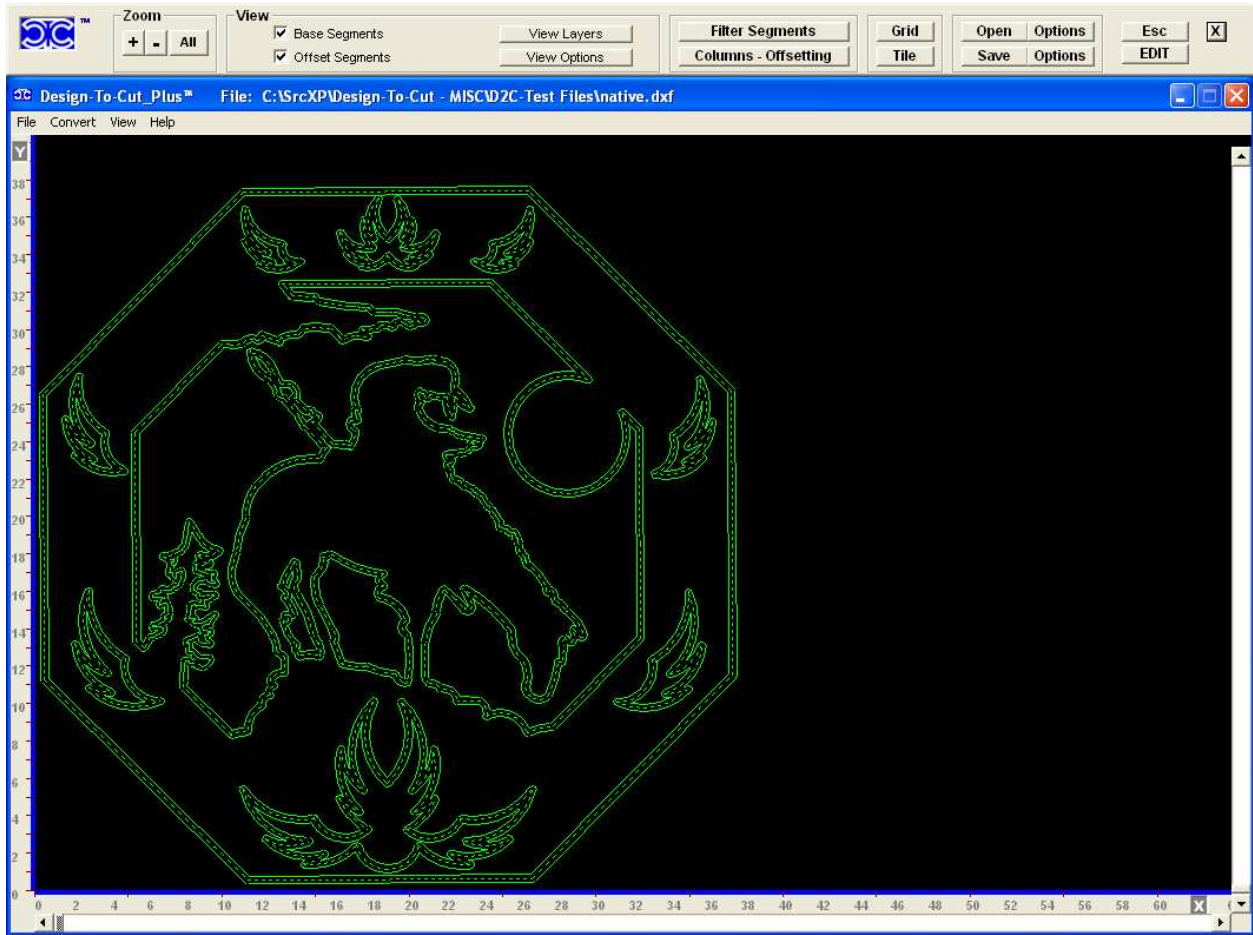
Next, we'll produce offsetting to both inside and outside of all lines and arcs, this will be our inlay file:



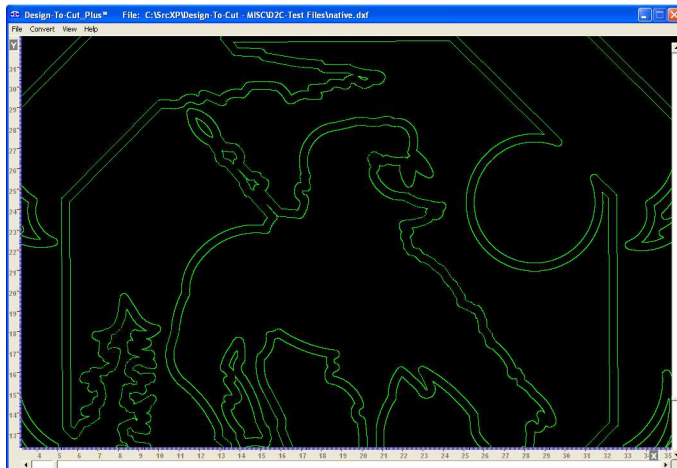
Continued next page..

We have offset 0.2 inches to both sides of all lines and arcs.

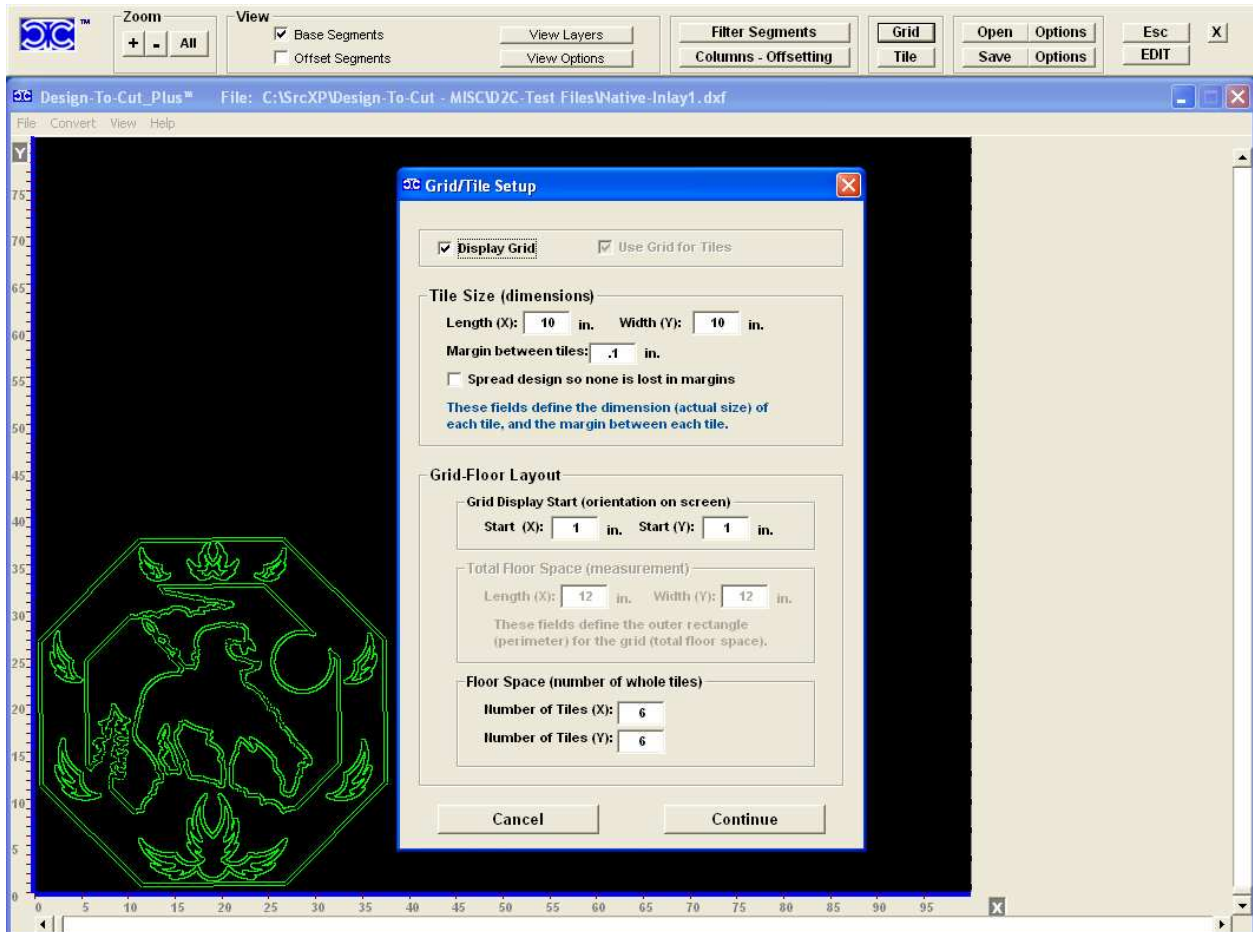
Note: width of all columns/veins are 0.4 inches; **View** options for **Base Segments** and **Offset Segments** are both checked ON. Base segments are shown as dashed lines.



A view showing only the offset segments (will be our inlay cut file):

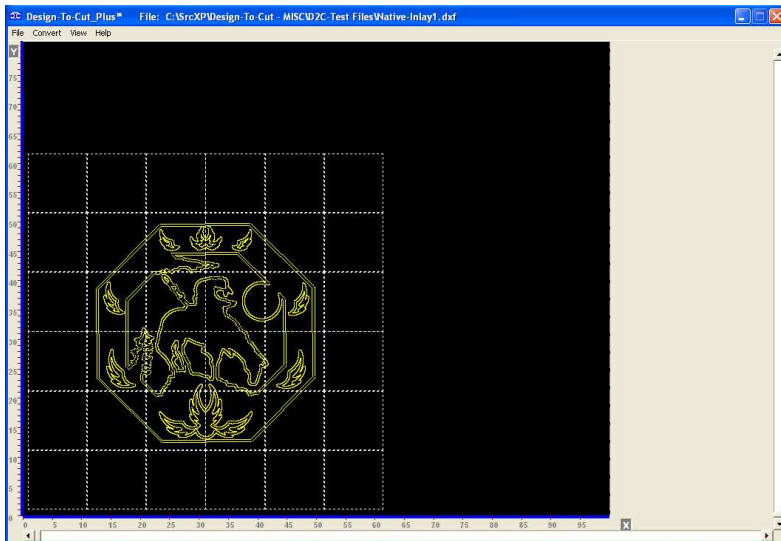
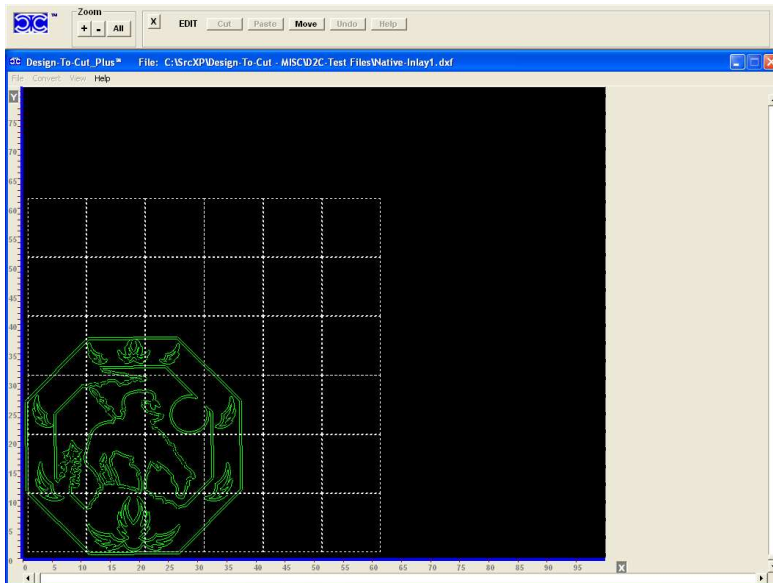


Selecting the Grid option displays the Grid/Tile setup form:

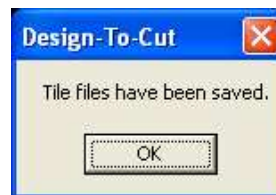
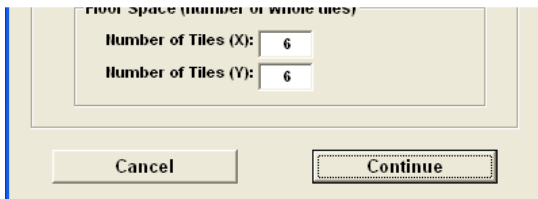


We've identified our individual tile size to be 10 x 10 inches, with 6 tiles horizontal (X) and 6 tiles vertical (Y). Spacing between each tile is 0.1 inches.

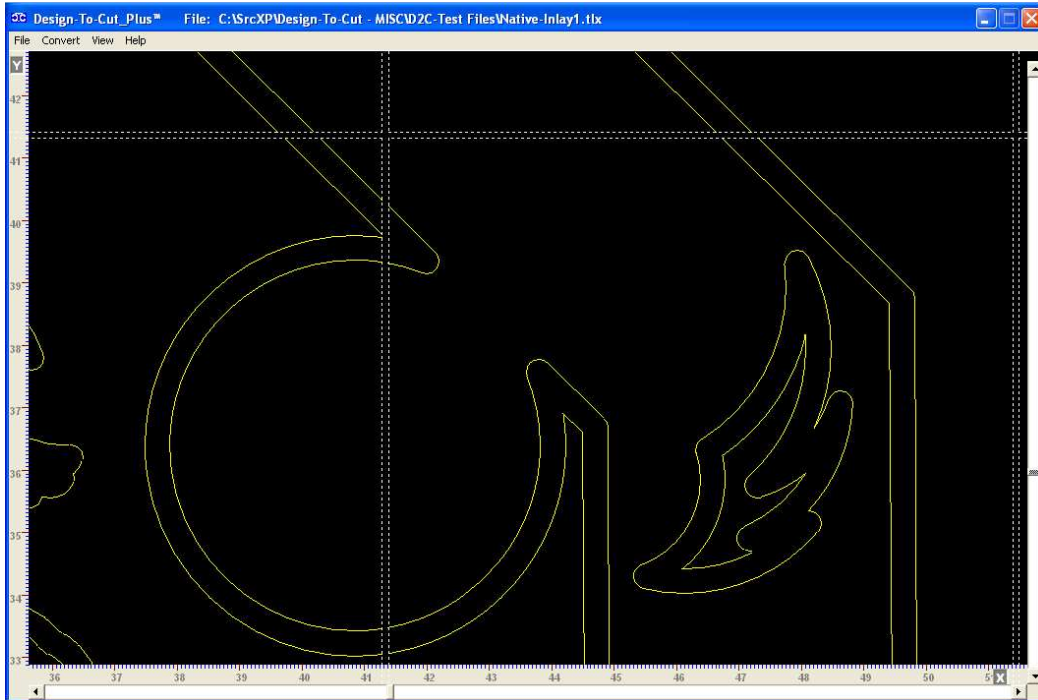
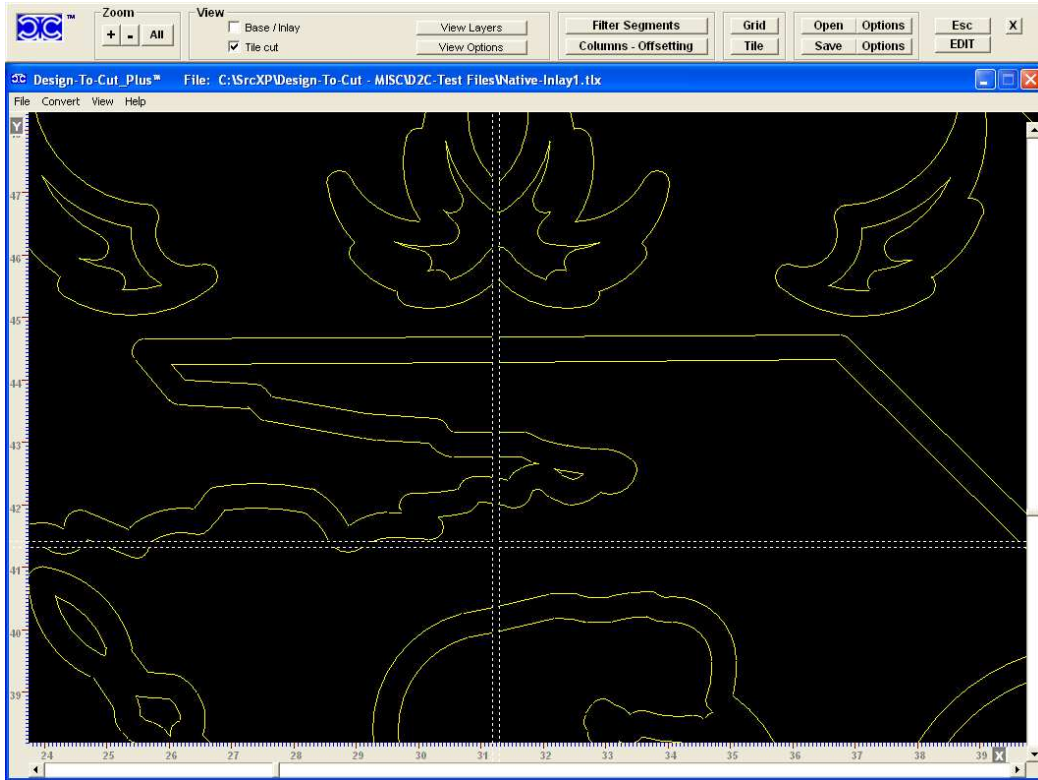
Next, we'll use EDIT to move the inlay so it's oriented appropriately over the tiles:



After positioned correctly, we select the **Tile** option and press **Continue**. Design-To-Cut will proceed to save cut data for each individual tile:

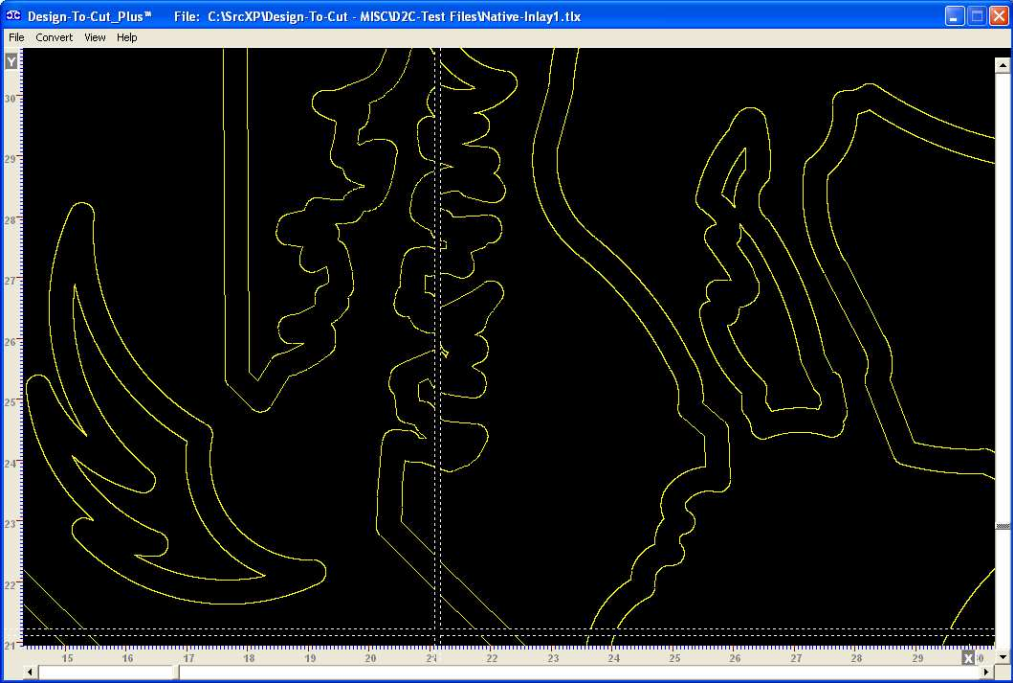


Close-up views of cut lines for each tile (note: no overlapping into space between tiles):

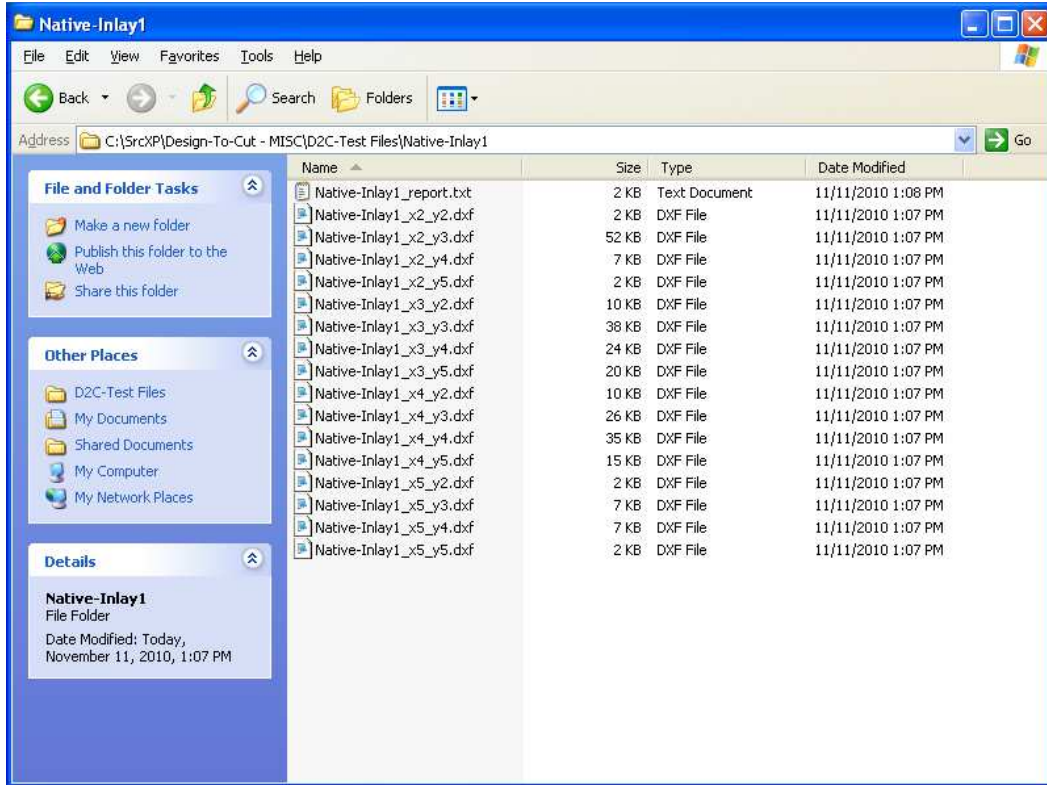


Continued next page..

More close-up views of tiles (all segments between tiles have been trimmed automatically):



Cut-line data for each tile is saved to individual (.dxf) files. All tile files for our inlay file are saved in a separate folder. The sub folder has same prefix as our original inlay file:

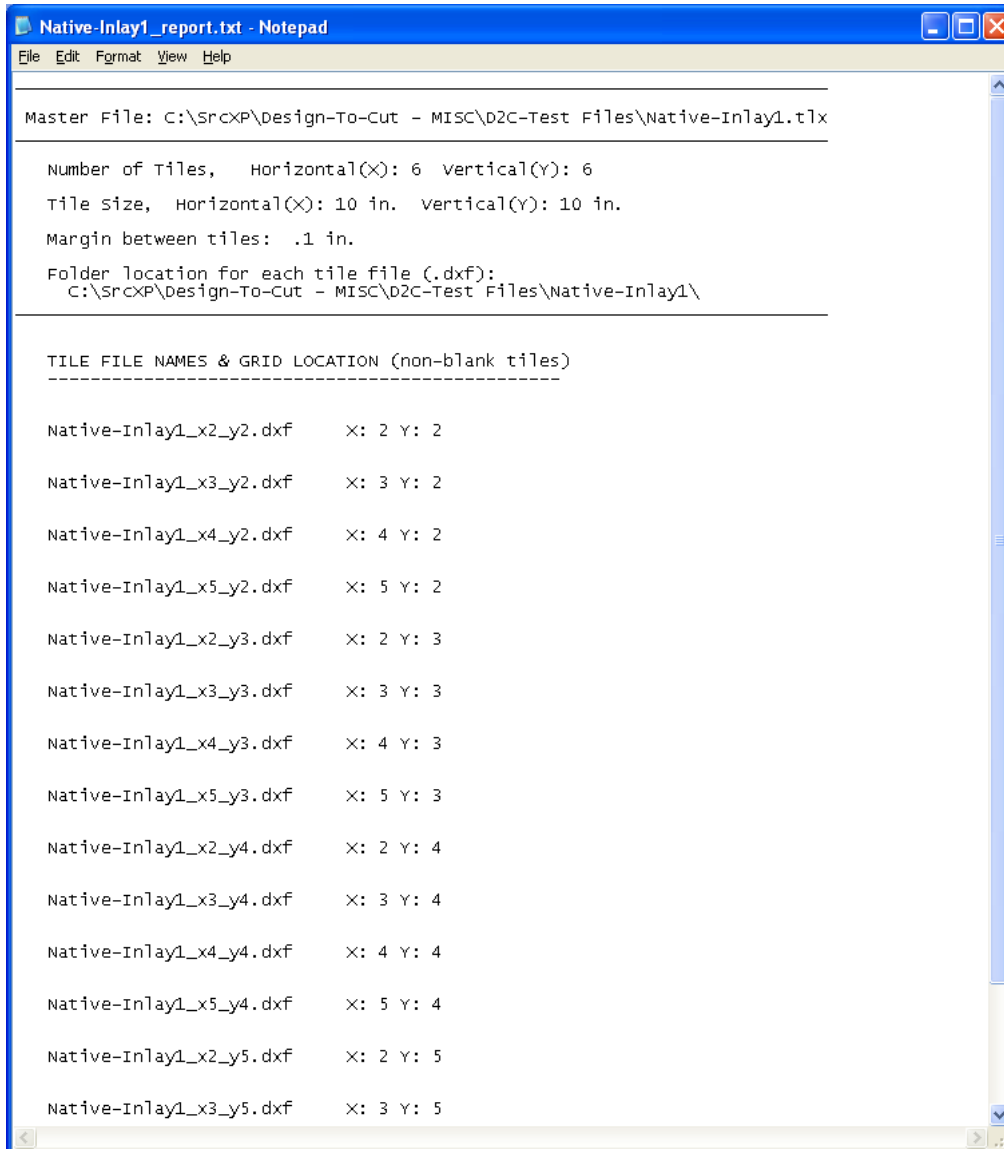


Note: each separate tile file is named with it's column (X) and row (Y) position.

A text file with full description of the tile application is written to the same sub folder. In this case, the text file is named: Native-Inlay1\_report.txt.

Continued next page..

## Tile application report (text file):



```
Native-Inlay1_report.txt - Notepad
File Edit Format View Help
-----
Master File: C:\SrcXP\Design-To-Cut - MISC\D2C-Test Files\Native-Inlay1.tlx
-----
Number of Tiles,  Horizontal(X): 6 vertical(Y): 6
Tile Size, Horizontal(X): 10 in. vertical(Y): 10 in.
Margin between tiles: .1 in.
Folder location for each tile file (.dxf):
  C:\SrcXP\Design-To-Cut - MISC\D2C-Test Files\Native-Inlay1\
-----
TILE FILE NAMES & GRID LOCATION (non-blank tiles)
-----
Native-Inlay1_x2_y2.dxf      X: 2 Y: 2
Native-Inlay1_x3_y2.dxf      X: 3 Y: 2
Native-Inlay1_x4_y2.dxf      X: 4 Y: 2
Native-Inlay1_x5_y2.dxf      X: 5 Y: 2
Native-Inlay1_x2_y3.dxf      X: 2 Y: 3
Native-Inlay1_x3_y3.dxf      X: 3 Y: 3
Native-Inlay1_x4_y3.dxf      X: 4 Y: 3
Native-Inlay1_x5_y3.dxf      X: 5 Y: 3
Native-Inlay1_x2_y4.dxf      X: 2 Y: 4
Native-Inlay1_x3_y4.dxf      X: 3 Y: 4
Native-Inlay1_x4_y4.dxf      X: 4 Y: 4
Native-Inlay1_x5_y4.dxf      X: 5 Y: 4
Native-Inlay1_x2_y5.dxf      X: 2 Y: 5
Native-Inlay1_x3_y5.dxf      X: 3 Y: 5
```

\*\*Coming for Design-To-Cut\_Plus™ >> ability to import any grid/tile layout. This will enable tiles of all shapes and dimensions (i.e. regular and irregular tile boundaries, and variations within same application).